

2023-04-07

130.00 mm

190.00 mm



OWNER'S MANUAL
DIGITAL OIL FILLED RADIATOR HEATER
WITH REMOTE CONTROL
Model No.: MG-MTOH907LC
SKU: 32551



120V~ 60Hz 1500W



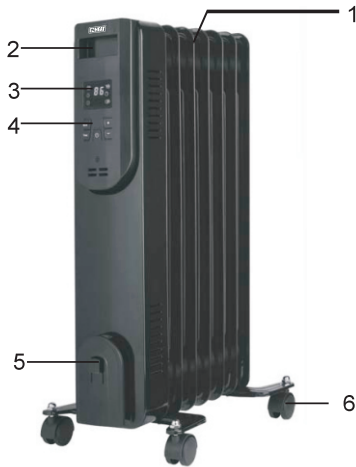
IMPORTANT SAFETY INSTRUCTIONS



When using electrical appliances, follow basic safety precautions to reduce the risk of fire, electrical shock, personal injury and property damage. Read all safety precautions and familiarize yourself with this manual prior to use.

WARNING: Use your heater only as described in this manual. Any other use is not recommended by the manufacturer, and can cause fire, electrical shock, personal injury and property damage.

- **DO NOT** use your heater outdoors, or for industrial or commercial purposes. Your heater is for **INDOOR HOUSEHOLD USE ONLY!**
- **DO NOT** depend on the Power Control Switch as the sole means of disconnecting power from your heater. Disconnect the power cord from the electrical outlet when your heater is not in use, when changing locations, or prior to cleaning.
- **DO NOT** – Use your heater on Carpeting, Vinyl Flooring, Place your heater on a stable, level surface, and route the power cord away from traffic areas.
- Connect the power cord to an easily-accessible electrical outlet so that your heater can be disconnected immediately in the event of an emergency.
- Ensure that twelve inches of clearance exists around your heater to avoid obstructing intake and exhaust flow.
- For optimal operation and to avoid overloading a circuit, connect your heater to circuit that is not supplying power to other electrical appliances.
- **DO NOT** operate your heater near curtains, plants, window covers, or other loose objects; such objects can become lodged in your heater's components and cause a fire.
- **NEVER** cover your heater or place your heater or its power cord under rugs, carpeting or similar objects, as fire can occur.
- **Your heater** is not intended for use in bathrooms, laundry areas or similar damp locations.
- **NEVER** place your heater where it may come in contact with water or other liquids.
- **DO NOT** use devices that would turn your heater on and off automatically, as the use of such devices can cause a fire.
- **DO NOT** immerse or expose your heater to any form of liquid.
- **NEVER** operate your heater near an open flame or in the presence of explosive or combustible gases or fumes, such as: gasoline, paint or other flammable liquids. Your heater has hot internal components.
- **DO NOT** expose your heater to excessive heat or humidity, as electrical component damage can occur.
- **DO NOT** pull on the power cord. Always grasp the plug when connecting and disconnecting the power cord from the electrical outlet.
- **DO NOT** use extension cords with your heater. Extension cords can overheat and cause a fire.
- **DO NOT** remove, replace, repair or tamper with the originally-supplied plug.
- **NEVER** attempt to open or service your heater. Doing so may cause personal injury or property damage. Should your heater or its power cord malfunction or become damaged, discontinue operation immediately and consult a qualified repair technician.
- **Extreme Caution** is necessary when your heater is used near children, pets and invalids. Keep your heater out of the reach of children, pets and invalids to reduce the risk of personal injury and electrical shock.

PARTS OF THE HEATER



DESCRIPTION	PART	QUANTITY
U-Shape Bolt & Wing Nut		2
U-Shape Bracket with Castor		2

PARTS OF THE HEATER

1. Oil fins (x7)
2. Carry handle
3. Display
4. Control panel
5. Power cord housing
6. Rolling casters

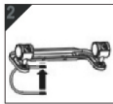
DO NOT OPEN OR REFILL/CHANGE OIL FINS OIL FINS ARE PERMANENTLY SEALED AND DO NOT REQUIRE REFILLING OR OIL CHANGING. ATTEMPTING TO OPEN FINS WILL DAMAGE THE UNIT. THIS UNIT IS FILLED WITH A NON TOXIC MINERAL OIL.

CAUTION:

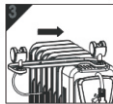
DO NOT OPERATE THIS HEATER WITHOUT CASTERS ATTACHED



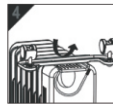
(1)



(2)



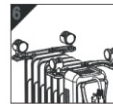
(3)



(4)



(5)



COMPLETE ASSEMBLY

Assembly Instructions:

- Unpack the heater and remove all parts from the packaging.
1. For ease of assembly, place the heater upside down or on its side on a soft surface which will not scratch the unit. Use one hand to hold it in place. (1)
 2. Unscrew nut and put U-shape bolt in one hole of bracket. (2)
 3. Attach the bracket onto the heater with the U bolts and wing nuts supplied as shown in 3, 4, 5.
 4. Assemble another castor with bracket same with 2, 3, 4, 5.

Instructions

Placement of the heater

1. Turn the heater upright. Ensure legs are correctly installed and level.
2. Place heater on a flat and stable surface. Setting the heater on an incline or decline may cause damage to the unit and create a hazardous situation.
3. Proceed to OPERATING INSTRUCTIONS.

Pre-operation instructions

1. Carefully remove your heater from its shipping box. (The shipping box can be reused for off-season storage).
2. Place your heater on a firm, level surface.
3. Completely uncoil the power cord, and connect your heater directly into a 120 Volt, grounded AC electrical outlet.

Note: The power cord has a polarized plug (with one blade wider than the other) that will only fit in a polarized outlet one way. If it does not insert easily try reversing the plug. If it still does not fit contact your electrician to replace your outlet. DO NOT defeat the safety purpose of the polarized plug.

CAUTION: TO PREVENT ELECTRIC SHOCK MATCH WIDE BLADE OF PLUG TO WIDE SLOT, FULLY INSERT.

The control panel

symbols

- ☀ Low Power Level (600W)
- ☀☀ Medium Power Level (900W)
- ☀☀☀ High Power Level (1500W)
- °F Heating Mode
- ⌚ Timer Mode
- ⏻ Power on



Controls on product

- ⏻ : press this button after plug in to power on the heater and start operation, or press it repeatedly to stop operation and set the heater into standby mode.
- **Mode**: use this button to set the power level.
- **Timer**: use this button to set the timer.
- [+] and [-]: use these buttons when setting the desired temperature, or for setting the timer.

Controls on remote control

- **POWER:** press this button after plug in to power on the heater and start operation, or press it repeatedly to stop operation and set the heater into standby mode.
- **MODE:** use this button to set the power level.
- **TIMER:** use this button to set the timer.
- [\wedge] and [\vee]: use these buttons when setting the desired temperature, or for setting the timer.



Setting the temperature

The heater has a thermostat which enables you to set the temperature from 59°F to 95°F. Once a temperature has been set, the heater will remain on until the room temperature has reached the temperature on the digital display. The thermostat will then cycle on and off to maintain the set room temperature.

- Power on the heater, the display will show 88 and keep flashing. Press Power button to set the desired power level. The desired temperature 75°F and power level will be shown and flash on the screen.
- Use the [+ or \wedge] and [- or \vee] buttons to set the desired temperature, from 56° F to 95° F.
- While the heater is warming up the room, the heat level symbol will keep flashing on the display until the set temperature has been reached. The symbol will stop flashing then. The heater comes on again when the room temperature drops below the desired temperature.
- Use the [+ or \wedge] and [- or \vee] buttons to change the desired room temperature at any time.

Setting the timer

When the heater is powered on. You can set the timer to switch off the appliance automatically after a certain period of time (1 to 12 hours from the time the function is set).

1. Power on the heater, the display will show 88 and keep flashing. Press Timer button to set the desired power off time. The display will show 00 and start flashing on the screen.
2. Use the [\wedge] and [\vee] buttons to set the heater operation time (between 1 and 12 hours). The function will activate once the timer icon stops flashing.
3. The heater will cycle on and off as per the set temperature setting and discontinue operation when the set time has run out.

Example: It is now 4pm. The heater is on and you want it to shut off at 11pm automatically. Set the timer-off function to 7 hours: the heater will cycle on and off to maintain the set temperature. It will stop operating at 11pm and go into standby mode. It is recommended to unplug the heater from the wall outlet when the heater is not in use.

Clean and maintenance

1. Press Power Button to turn off the heater.
2. Disconnect the power cord from the electrical outlet, and wait until the unit cool down.

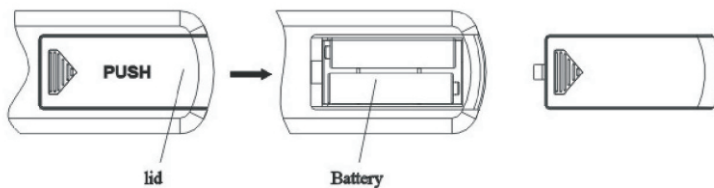
WARNING: Do not expose the heating elements or switches to water, cleaning liquids or other chemicals, as fire, electrical shock, personal injury and property damage can occur.

CAUTION: Do not use gasoline, benzene or thinner to clean your heater, as these chemicals can cause surface damage.

1. Use a vacuum cleaner with a crevice tool to remove dust from the interior or your heater.
2. Use a clean, soft and lightly damp cloth to gently wipe the surface of the enclosure.
3. Allow the enclosure to dry completely prior to operating your heater.

Off-season storage instructions

1. Secure the power cord, and place your heater in its original shipping container, or a similar container.
2. Store the container in a cool, dry location.
3. Take out the remote batteries (to prevent corrosion) as shown below. Store the remote in a safe place.



Safety features

Your heater is equipped with a Tip-Over Safety Switch. When your heater tips over, it will turn off automatically.

Your heater is equipped with an Overheat Protection System. When the threshold temperature has been reached, your heater will turn off automatically.

To reset your heater when the Overheat Protection System has been activated, perform the following:

1. Turn the Power Control Switch to the 'OFF' position, and turn the Temperature Control Switch to the lowest setting.
2. Disconnect the power cord from the electrical outlet.
3. Allow your heater to cool down for approximately ten minutes.
4. Connect the power cord to the electrical outlet.
5. Turn the Power Control Switch to the 'HIGH' position, and turn the Temperature Control Switch to the highest setting.
6. If your heater does not operate normally, turn the Power Control Switch to the 'OFF' position, disconnect the power cord from the electrical outlet, and consult an authorized repair technician.

Warranty:

This unit is guaranteed to the original retail purchaser against defects in quality or workmanship for a period of one year from the date of original purchase. If this unit fails because of a manufacturing defect within 30 days of purchase, return the unit, with your receipt, to the retailer. After 30 days, but within the warranty period, if the unit was purchased within the continental United States, return it, to Mr. Brands LLC for repair or replacement. If the unit was purchased outside the continental United States, return the unit to the place of purchase. This warranty does not cover damage caused by misuse, abuse, overheating or alteration. Repairs made by anyone other than Mr. Brands LLC are not covered in this warranty. Mr. Brands LLC will not be held liable for any losses due to neglectful operation. All implied warranties, including the warranties of merchantability and of fitness of purpose, if applicable, are hereby limited in duration to the period of one year from the date of original retail purchase. Some states do not allow limitations on how long an implied warranty lasts, so the above limitations may not apply to you. Incidental or consequential damages arising from a breach of either express or implied warranties are hereby disclaimed and excluded. Some states do not allow the exclusion of limitation of incidental or consequential damages, so this limitation or exclusion may not apply to you. Upon the expiration of this warranty all such liability will terminate. No other warranties are expressed or implied. This warranty gives you specific legal rights, and you may also have other rights which vary from state to state. No informal dispute settlement mechanisms are available. This limited warranty is given in lieu of all other warranties.

CUSTOMER ASSISTANCE

FOR IMMEDIATE CUSTOMER SERVICE, CALL: 1-877-420-7555
A CUSTOMER SERVICE REPRESENTATIVE WILL ASSIST YOU WITH
ANY QUESTIONS REGARDING YOUR HEATER.

Distributed By:
Mr. Brands, LLC.
Made in China

 **WARNING:**
Cancer and Reproductive Harm --
www.P65Warnings.ca.gov